

SWIS Summary

2016–17 Academic Year

5716 Schools | 3,072,664 Students | 1,853,214 ODRs

Data Reported August 2017

MAJORS ONLY

| Grade Range | Number of Schools | Mean Enrollment per School | Mean ODRs/100 Students/School Day | Median ODRs/100 Students/School Day | 25th Percentile ODRs/100 Students/School Day | 75th Percentile ODRs/100 Students/School Day |
|-------------|-------------------|----------------------------|-----------------------------------|-------------------------------------|--|--|
| K-6 | 3582 | 469 | .34 (.60) | .20 | .09 | .39 |
| 6-9 | 1024 | 643 | .48 (.67) | .31 | .15 | .57 |
| 9-12 | 526 | 931 | .48 (.71) | .28 | .16 | .53 |
| PreK-8 | 363 | 427 | .55 (1.84) | .27 | .12 | .51 |
| PreK-12 | 92 | 308 | .90 (2.15) | .26 | .15 | .65 |

ODR=office discipline referral; (#)=standard deviation; Shaded column=most useful for decision making

continued on next page

MINORS ONLY

| Grade Range | Number of Schools | Mean Enrollment per School | Mean ODRs/100 Students/School Day | Median ODRs/100 Students/School Day | 25th Percentile ODRs/100 Students/School Day | 75th Percentile ODRs/100 Students/School Day |
|-------------|-------------------|----------------------------|-----------------------------------|-------------------------------------|--|--|
| K-6 | 2952 | 461 | .44 (.73) | .25 | .10 | .54 |
| 6-9 | 786 | 606 | .57 (.73) | .35 | .13 | .72 |
| 9-12 | 380 | 885 | .39 (.66) | .17 | .06 | .43 |
| PreK-8 | 308 | 427 | .73 (2.14) | .31 | .11 | .64 |
| PreK-12 | 84 | 309 | .72 (.72) | .41 | .20 | .98 |

ODR=office discipline referral; (#)=standard deviation; Shaded column=most useful for decision making

IN-SCHOOL SUSPENSIONS

| Grade Range | Number of Schools | Mean Enrollment per School | Mean Count of Students with ISS/100 Students | Mean Count of ISS Events/100 Students | Mean Count of Days of ISS |
|-------------|-------------------|----------------------------|--|---------------------------------------|---------------------------|
| K-6 | 3582 | 469 | 2.00 (3.67) | .02 (.14) | 3.09 (9.68) |
| 6-9 | 1024 | 643 | 8.24 (8.94) | .07 (.34) | 22.68 (37.85) |
| 9-12 | 526 | 931 | 7.27 (8.19) | .12 (.42) | 17.92 (28.18) |
| PreK-8 | 363 | 427 | 3.42 (4.91) | .03 (.17) | 6.24 (17.10) |
| PreK-12 | 92 | 308 | 3.58 (4.82) | .08 (.47) | 5.10 (8.63) |

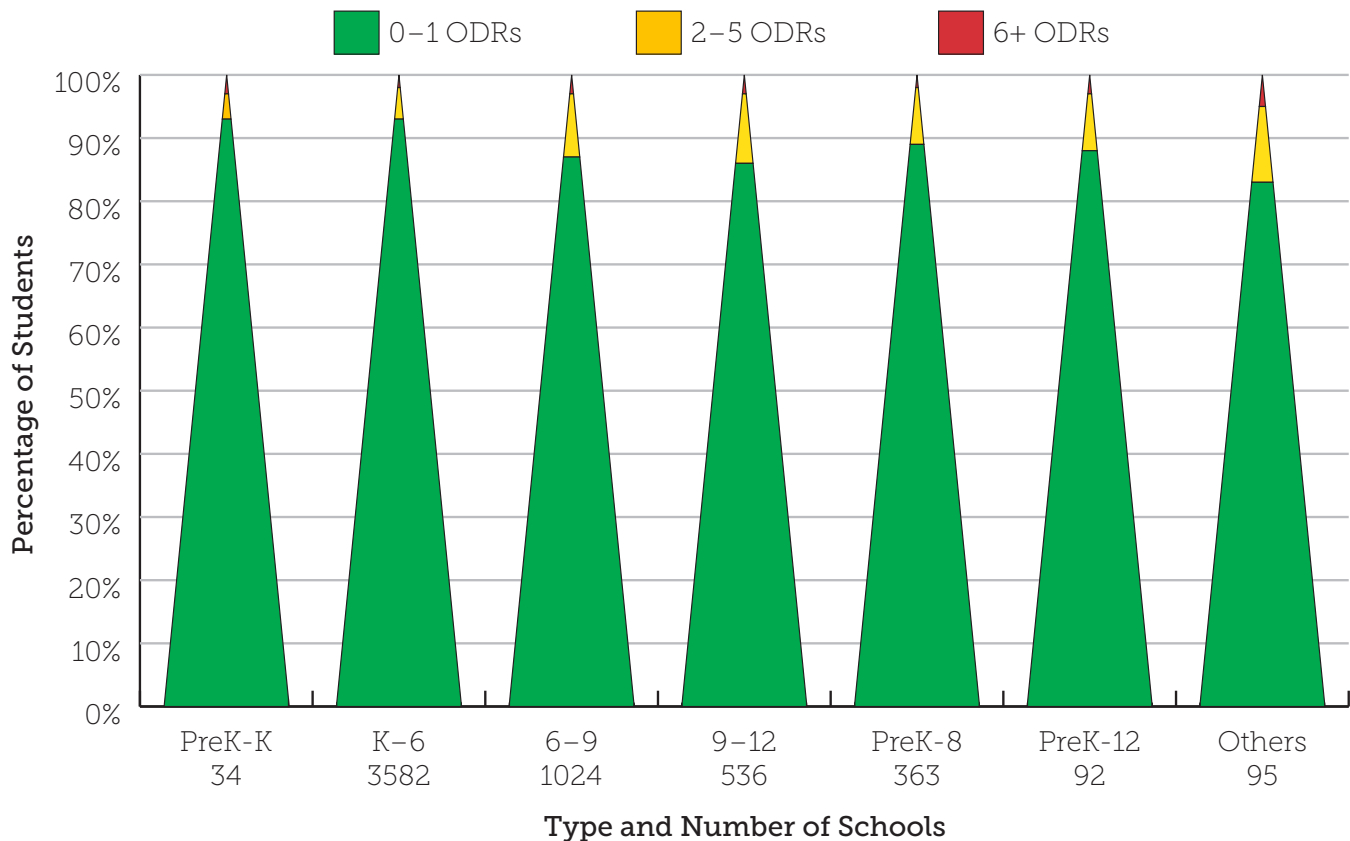
ISS=in-school suspension; (#)=standard deviation

OUT-OF-SCHOOL SUSPENSIONS

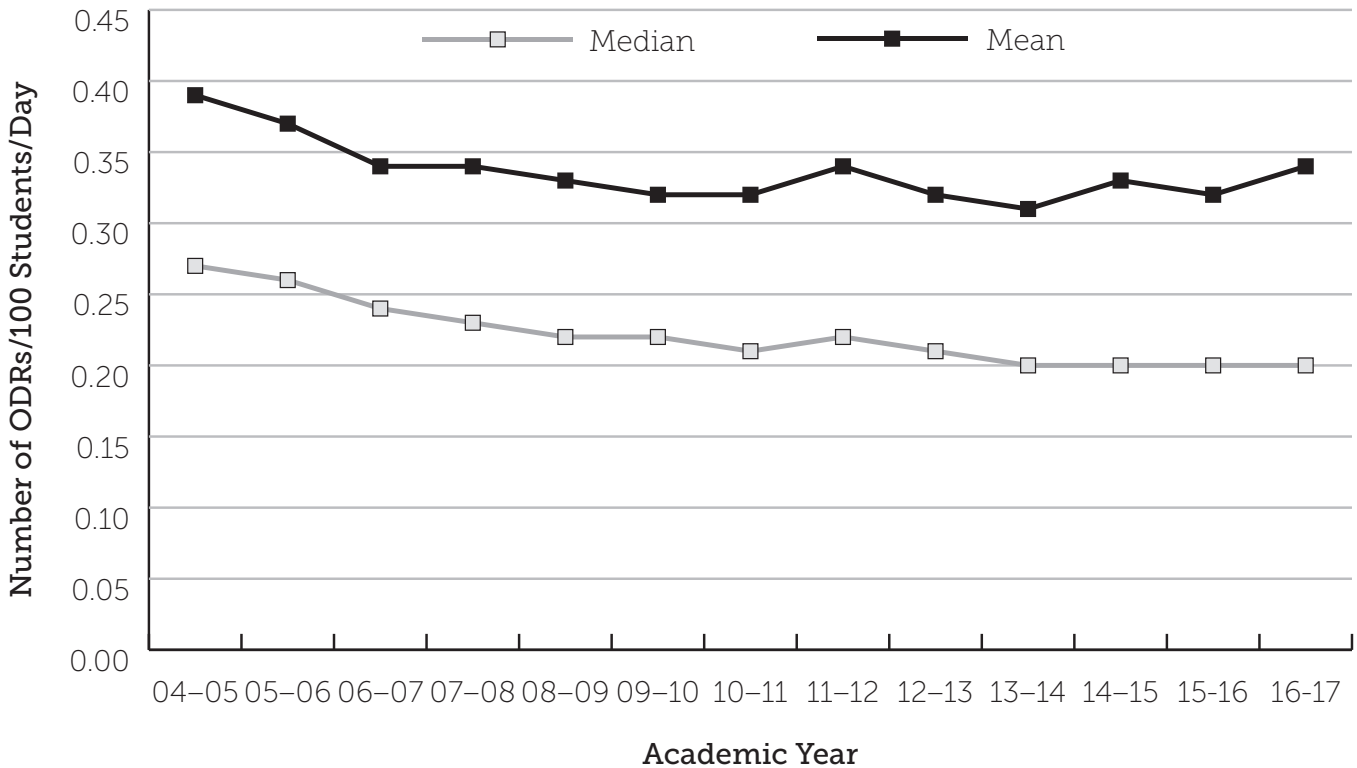
| Grade Range | Number of Schools | Mean Enrollment per School | Mean Count of Students with OSS/ 100 Students | Mean Count of OSS Events/100 Students | Mean Count of Days of OSS |
|-------------|-------------------|----------------------------|---|---------------------------------------|---------------------------|
| K-6 | 3582 | 469 | 2.31 (3.89) | 3.30 (10.11) | 6.49 (17.54) |
| 6-9 | 1024 | 643 | 6.93 (7.32) | 5.56 (37.01) | 32.28 (49.98) |
| 9-12 | 526 | 931 | 6.40 (6.47) | 7.41 (33.50) | 31.41 (42.94) |
| PreK-8 | 363 | 427 | 4.51 (6.16) | 8.37 (60.32) | 16.26 (31.05) |
| PreK-12 | 92 | 308 | 4.64 (5.74) | 16.13 (62.69) | 14.67 (24.35) |

OSS=out-of-school suspension; (#)=standard deviation

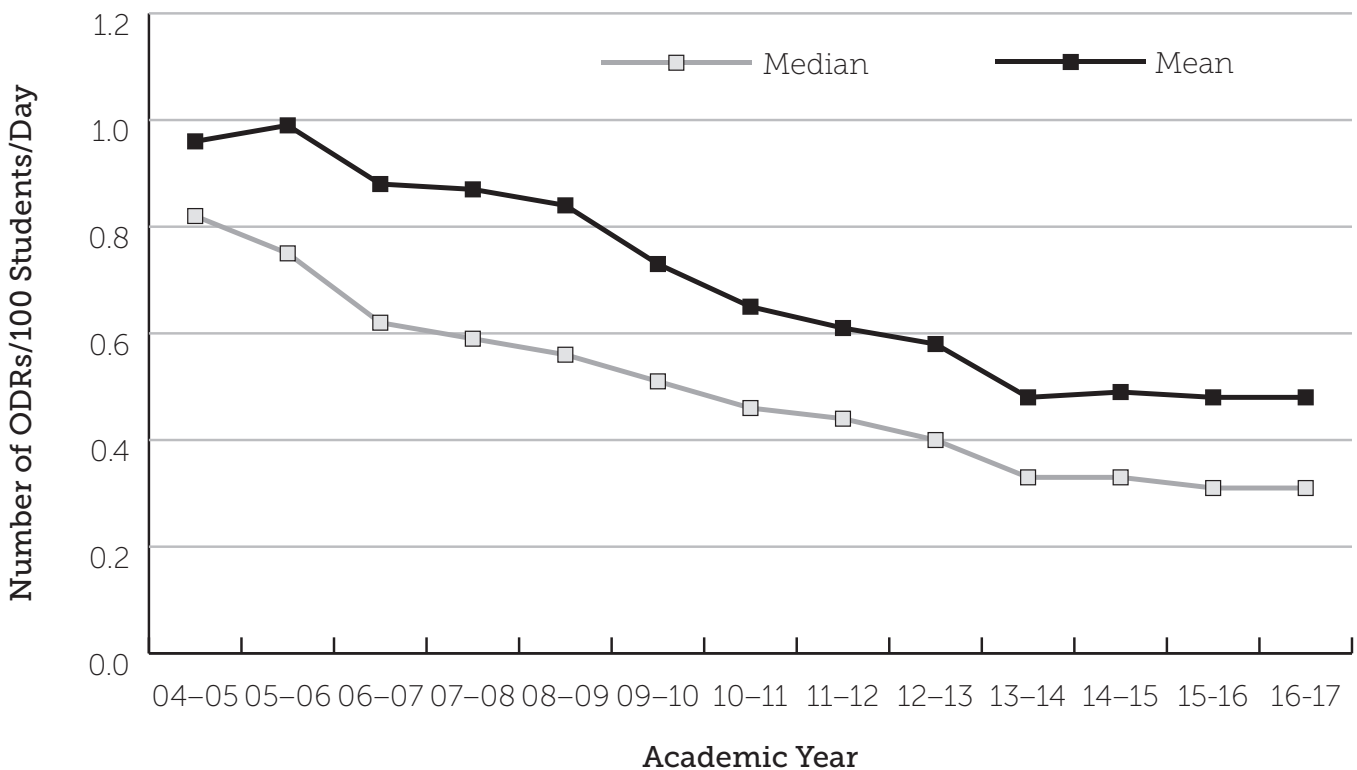
MAJOR ODRs/GRADE LEVEL (TRIANGLE)



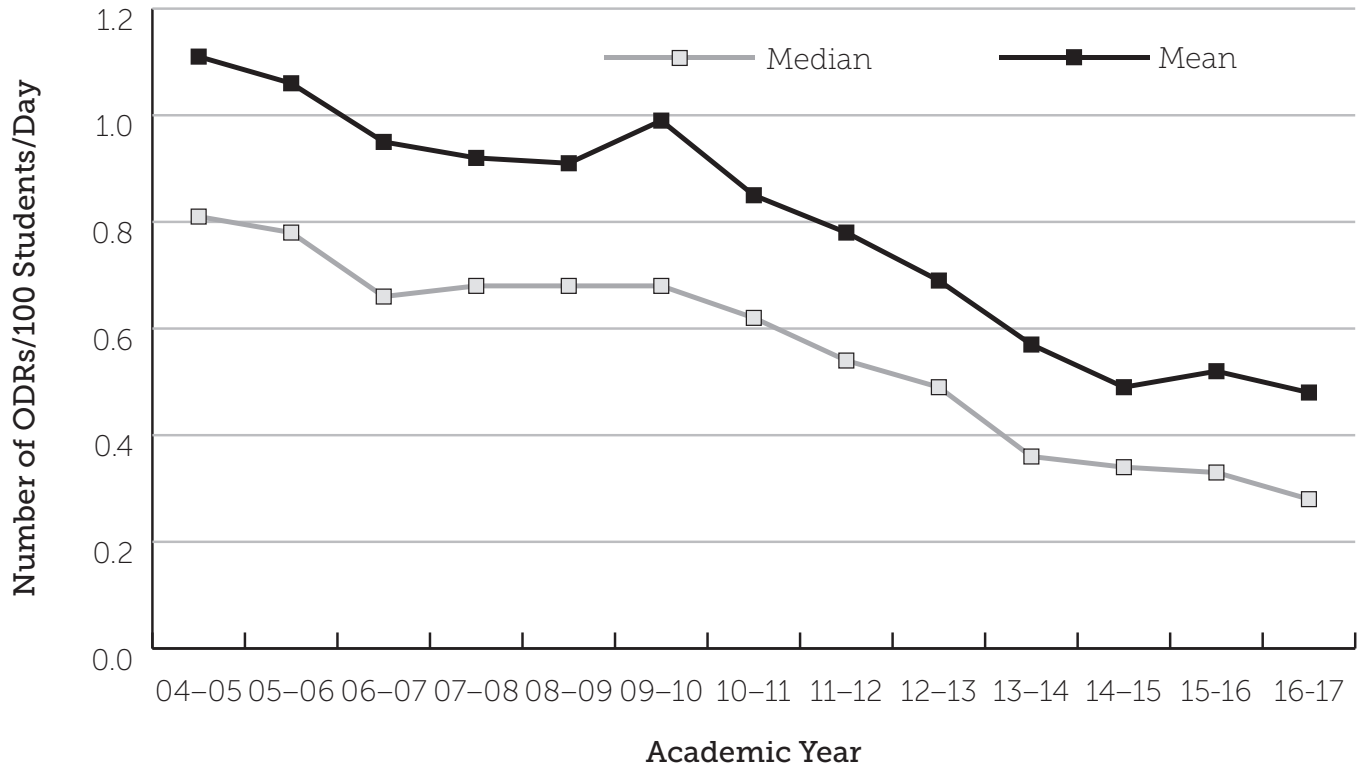
**ELEMENTARY SCHOOL HISTORICAL TREND,
NATIONAL MEDIAN AND MEAN MAJOR ODRs/100 STUDENTS/DAY**



**MIDDLE SCHOOL HISTORICAL TREND,
NATIONAL MEDIAN AND MEAN MAJOR ODRs/100 STUDENTS/DAY**



**HIGH SCHOOL HISTORICAL TREND,
NATIONAL MEDIAN AND MEAN MAJOR ODRs/100 STUDENTS/DAY**



PBISApps.org is the home of web-based applications used by schools, districts, regions, and states in the US and abroad as part of their on-going decision-making processes.

Educators have been using PBISApps for over ten years to make schools safer, more

productive learning environments — empowering them to make data-based decisions in real time.

PBISApps.org is run by Educational & Community Supports, a research unit at the University of Oregon.



www.pbisapps.org | 855-455-8194