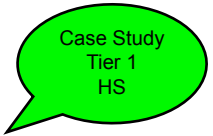


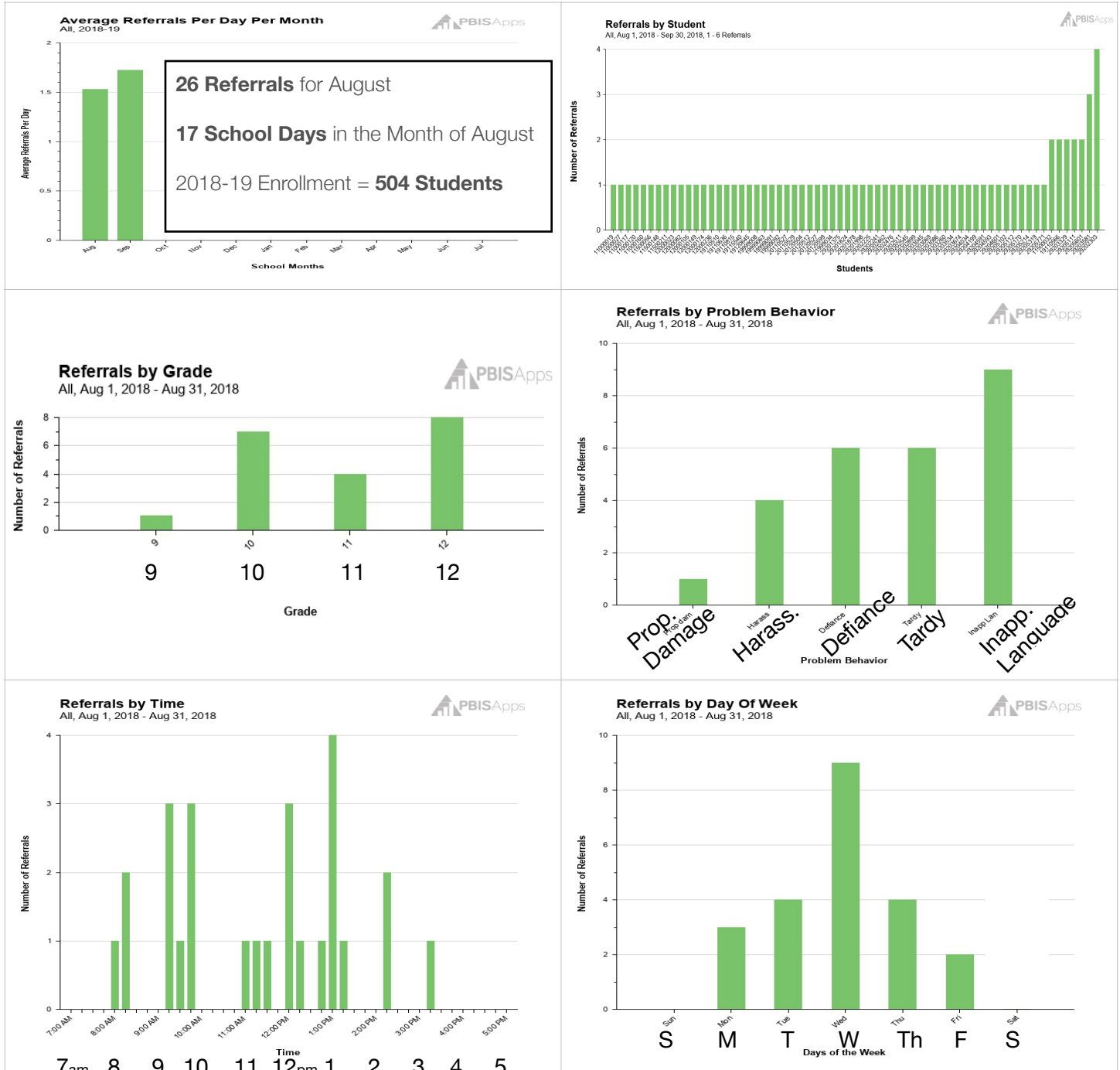
School-Wide Case Study

Data Analysis Worksheet & Problem Solving Worksheet



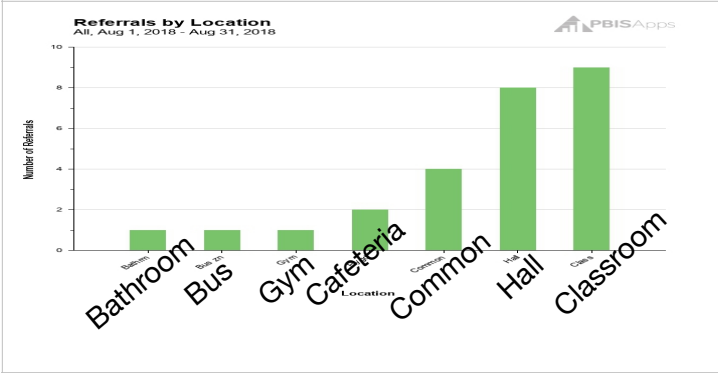
Your Tier 1 PBIS Team is meeting to look at school-wide data from August.

STEP #1: Use the Big 7 data graphs below to complete page 1 of the *Data Analysis Worksheet*.

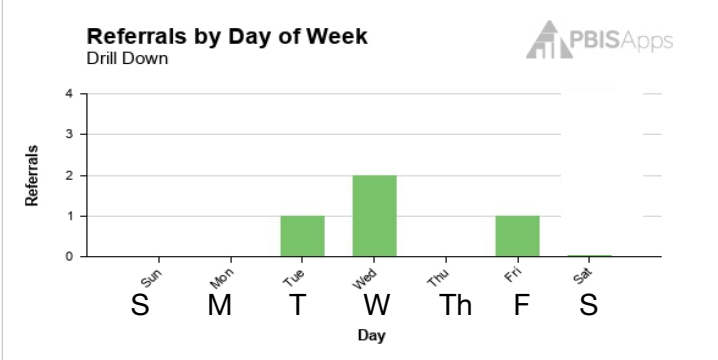
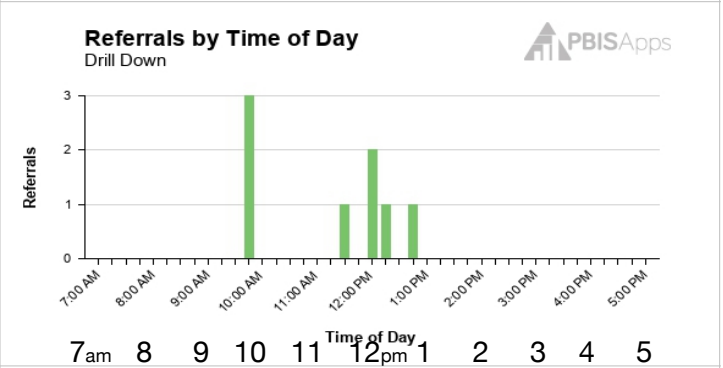
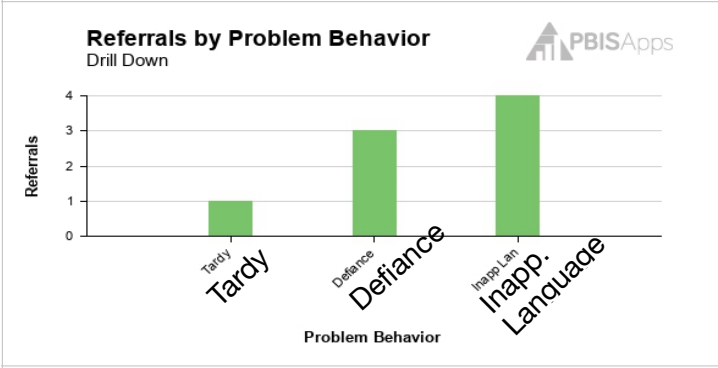
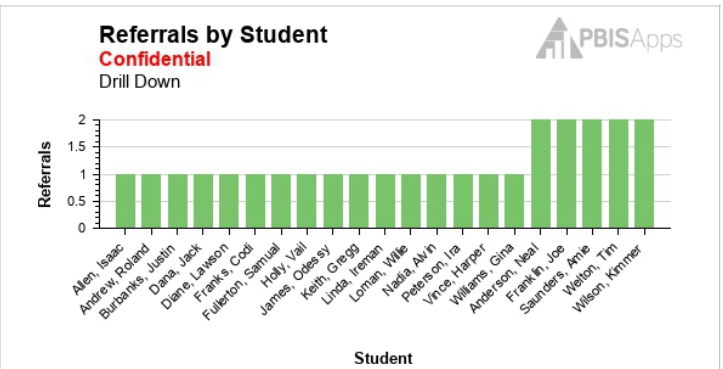
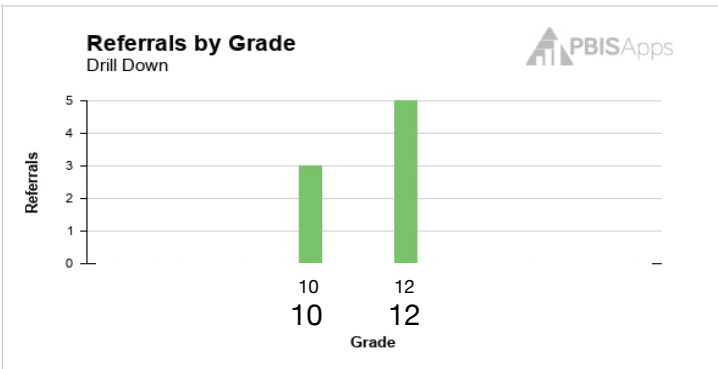


School-Wide Case Study

Data Analysis Worksheet & Problem Solving Worksheet



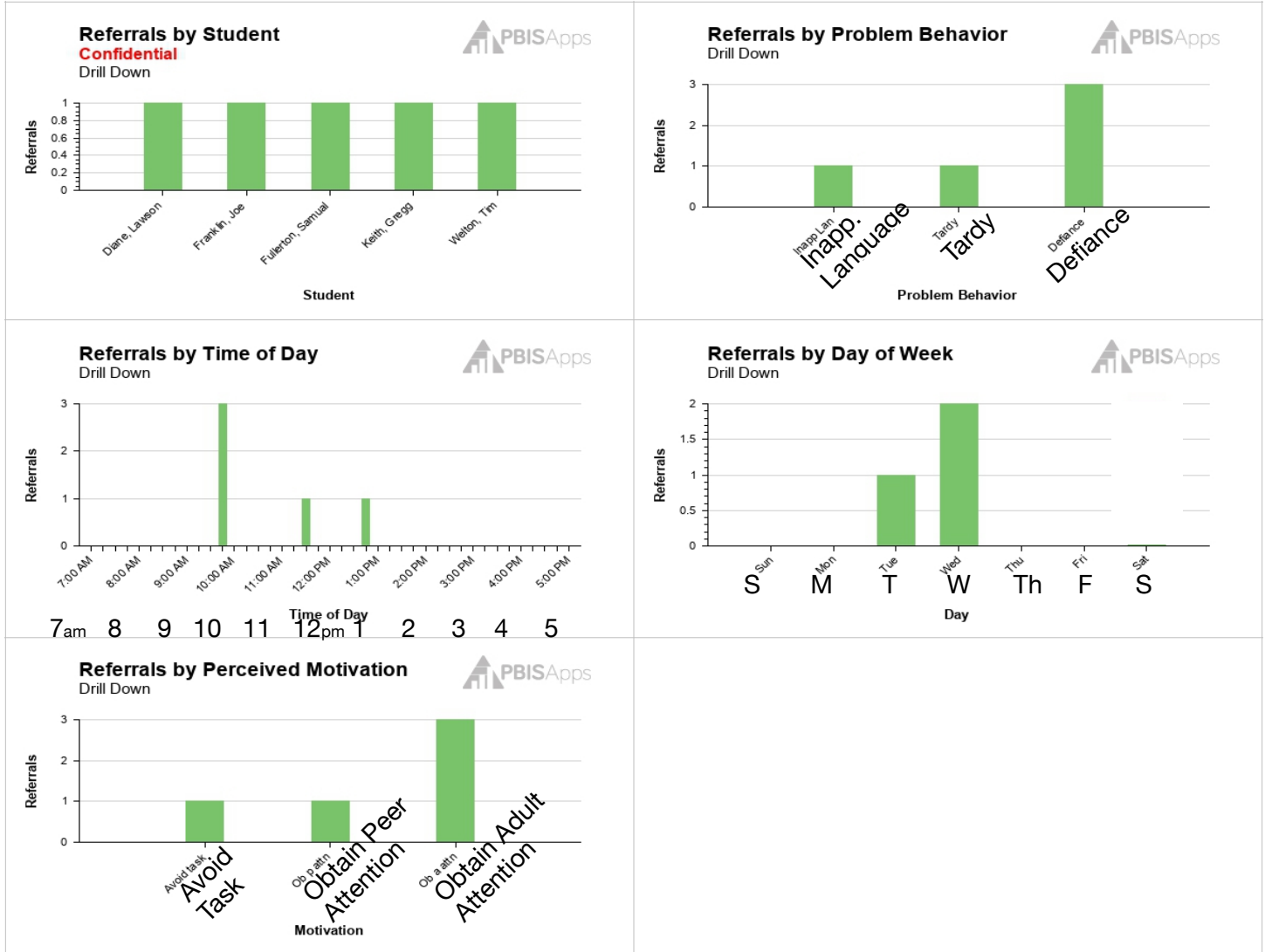
STEP #2: Based on the data above, your team makes the decision to look deeper at the behavior problems that occurred in the Classrooms during August. So, the team drilled down (filtered August data) by **Classroom**. Here are the Big 5 data graphs for the Classroom location.



School-Wide Case Study

Data Analysis Worksheet & Problem Solving Worksheet

STEP #3: Based on the data above, your team is most concerned about the 12th grade. So, the team drilled down (filtered August Classroom data) by **12th grade**. Here are the Big 4 graphs for the 12th grade Classroom. You also looked at Motivation, now that you have drilled down to a specific location and grade.



STEP #4: Based on the data above, use this drilled down data to complete page 2 of the *Data Analysis Worksheet* to write a Precise Problem Statement (Who, What, When, Where, Why) for the month of August that you intend to solve.

STEP #5: Complete the 1st page of the *Problem Solving Worksheet* using your Precise Problem Statement. For a school-wide problem (like this Case Study shows) you do not need complete the Targeted Student portion of the *Problem Solving Worksheet*.

STEP #6: Once that you have written the Precise Problem Statement complete the rest of the *Problem Solving Worksheet* to create a Tier 1 intervention.

Blank Page

Data Analysis Worksheet

School: _____

Month/Year: _____

Office Discipline Referrals	
Average Referrals per Day per Month ($\text{ODR} \div \# \text{ School Days}$)	
ODR Rate: Average Referral per 100 Students per Day ($\text{ODR} \div \# \text{ Students} \div \# \text{ School Days} \times 100$)	
How does our rate compare with last month? (What is the trend: Increase, Decrease, or Flat)	
Students - WHO were the Top 3 most frequent students this month?	
Grade - WHO were the Top 3 most frequent grades?	
Problem Behaviors - WHAT were the Top 3 most frequent problem behaviors?	
Time of Day - WHEN were the Top 3 most frequent times?	
Day of Week - WHEN were the Top 3 most frequent days?	
Location - WHERE were the Top 3 most frequent locations?	
Triangle Data	
How many students with 6+ ODR since start of school? (Tier 3)	
How many students with 2-5 ODR since start of school? (Tier 2)	
How many students with 0-1 ODR since start of school? (Tier 1)	

Data Analysis Worksheet

Additional Behavior Data

Average Referrals per Day this month? Trend?
(from front page)

Suspensions (ISS/OSS) this month? Trend?

Absences this month? Trend?

Tardies this month? Trend?

Define a Precise Problem Statement

Pro Tip: Based on front page, choose the most problematic category this month, then filter the ODR database by that category and 'drill down' to analyze the problem with more precision.

WHO is engaged in problem behavior?

WHAT is the problem behavior?

WHERE are problem behaviors occurring?

WHEN are problem behaviors most likely to occur?

WHY might this be happening?

Use the *Problem Solving Worksheet* to plan an intervention
for this Precise Problem Statement

Problem Solving Worksheet

Behavior or Student: _____

Date: _____

Precise Problem Statement <i>(From Data Analysis Worksheet)</i>	
Who is engaged in the behavior?	
What is the problem behavior?	
When is the behavior occurring?	
Where is the behavior occurring?	
Why...?	
Precise Problem Statement (all 5W's)	
<p><i>For targeted student:</i></p> <p>List the assessments that indicate problems (Assessment Matrix)</p>	
<p><i>For targeted student:</i></p> <p>List the interventions that match the behavior (Intervention Matrix)</p>	

Problem Solving Worksheet

Problem Solving Procedures <i>(adapted from TIPS II)</i>		
Plan to PREVENT the behavior problem		
Plan to TEACH a replacement behavior		
Plan to REINFORCE replacement behavior		
Plan to EXTINGUISH behavior problem		
CONSEQUENCE for behavior problem (Safety plan for dangerous behaviors)		
Plan to MONITOR progress	Monitor Staff Fidelity:	Monitor Student Behavior:
	Date to Evaluate Progress (min. 2x/month):	Person Responsible: